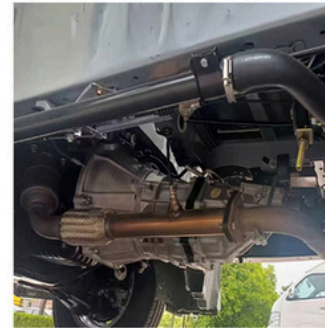


# ***LTS Series: LT5***

***Power, Durability and Versatility***



**The STARMAC LT5 Light-Duty Truck is the ideal vehicle for tackling the challenges of hard work. With a robust design, power, and high load capacity, it combines efficiency and functionality.**

***Taking your Business to the Next Level.***

<b>Performance</b>	Model	LT5
	Engine	DK4B1
	Combustible	Diesel
	Emission	EURO III
	Displacement	2.5L
	Rated Output	116HP/3800RPM
	Max. Torque	280Nm/1800-2400RPM
	Optional Engine	Gasoline 2.2L
	Rated output	103HP/4600RPM

<b>Dimensions</b>	Length	5050mm
	Width	1880mm
	Height	1998mm
	Wheelbase	2570mm
	Cargo Bed Dimensions	3030x1910x360mm
	Seats	2-3 seats
	Fuel tank	70L

<b>Chassis</b>	Driving Position	LHD/RHD
	Driving Type	4x2
	Clutch	Single disc, hydraulic control
	Transmission	6MT
	Tire	195R15C radial tire
	Gross vehicle Weight	3495 Kg
	Vehicle curb weight	1750 Kg
	Payload	1745 Kg
	Braking	Disc/ Drum
	Safety	ABD + EBD
	Front Suspension	Double wishbone independent suspension
	Rear Suspension	Leaf Spring
	Steering	Power Steering System
	Rear axle	Three-section welded rear axle, rear axle ratio 4.1

<b>Equipment</b>	Dual Airbags
	Air Condition
	Radio with USB
	Power Windows
	Steel Wheels
	Tilttable Steering Wheel
	Anti-UV Windshield